



KINGSTONE
GRANGE

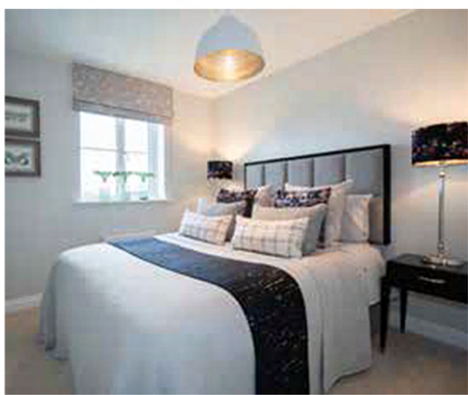
STUNNING NEW HOMES NEAR HEREFORD



If you are looking for a new home in Herefordshire, you need to visit Kingstone Grange. Set in a delightful village location just south of Hereford, these award winning homes offer the very best in family living.

- Peaceful village location
- Just six miles from Hereford centre
- Easy access to the A465, M50 and M5
- Beautifully built with a superb specification
- Traditional designs with generous gardens

Stylish 3 & 4-bedroom family homes available from £270,000*



The 2-bedroom Bangor from £167,000* & The 3-bedroom Cavan from £208,000*

Contact us TODAY to book your viewing
T: 07385 930740 / 01295 201072
kingstone.sales@laganhomes.com

Open Thursday – Monday,
10am – 5pm, by appointment
Sat nav postcode: HR2 9HN

Have you heard about the Discount Market Sale Scheme*?

If you have a local connection to Herefordshire, you could be eligible to buy a new home here at an exclusive discount of **20% off the full market price.***

This affordable home ownership scheme, a partnership with Lagan Homes & Herefordshire council is available to home buyers who meet the qualifying criteria.*

1

Ask for an application pack from Herefordshire Council

2

Complete all the forms and return ALL relevant documents

3

An affordability assessment will be completed and local connection to Herefordshire verified

4

If successful you can then start the process with Lagan Homes

Herefordshire.gov.uk

For more information contact:

housingdevelopment@herefordshire.gov.uk

*The DMS scheme is available on selected plots, subject to terms and conditions. Please ask the Sales Advisor for more information. *Prices correct at time of production. *DMS prices are fixed and not subject to change. Computer generated images show the Cavan DMS housetypes.

Lagan-homes.com

LaganHomes