

# SUTTON

## LOOKS FORWARD



**Sutton St. Nicholas  
Community Plan  
2013-2018**





# CONTENTS

	Page
Introduction	4
Brief History of Sutton St. Nicholas	5
Sutton St. Nicholas Today	7
The Community Plan	8
The Action Plan:	
Our Environment	10
Facilities	16
Highways	19
Growth within the Parish	22
Communications	25
Summary and How to get involved	28
Useful contacts	31



## INTRODUCTION

A Parish or Community Plan embraces everything that is unique to a parish and sets out action plans developed by the local community.

It is the vision for the future and gives the community the opportunity to provide information and express views on how they feel about the parish they live in and its development.

This Community Plan will form the basis for actions and decisions in Sutton St. Nicholas for the next five years, and will help towards creating a Neighbourhood Plan which is solely to do with development within the Parish.





## BRIEF HISTORY OF SUTTON ST. NICHOLAS

Sutton, or South Town so called because it lies south of Leominster, was formerly two parishes, Sutton St. Nicholas and Sutton St. Michael which were united in 1876. Sutton is situated on the left bank of the River Lugg 4 miles N.N.E. of Hereford. It is a small parish of 1612 acres approximately 2 miles across, north by south and east by west. It slopes on the one side towards the water-meadows on the banks of the River Lugg, and on the other side towards the marshy land through which runs the Little Lugg and its tributary brook the Rhea. The churches of St. Michael and St. Nicholas, Sutton Walls hill fort and the Wergin's Stone are the principal historic monuments. There are 24 listed buildings in total.

The Iron Age British tribes, who built the hill fort at Sutton Walls, lived in it continuously from about 350 BC to AD 200. Legend has it that Offa, King of Mercia built his palace there where Ethelbert, King of the East Saxons was murdered in AD 794. It is thought that the Anglo-Saxons inhabited Sutton from around AD 600. Sutton appears in the Domesday Book, Nigel Le Seculer the king's physician, Hugh Lasne and Walter de Freine were the principal landowners each possessing ploughs, oxen and serfs. Village life was self-contained and justice was dispensed by the Lord of the Manor at Sutton Court or Freens Court.

Sutton was seriously affected by the Civil War. Being so close to Hereford, on the main road to Leominster, the Royalists and Puritan troops would frequently pass through and make requisitions. Sutton's hero in the Civil War was Sir Harry Lingen who was High Sheriff of the county from 1638-43. He helped to defend Hereford against the Puritans







on two occasions and was knighted for his efforts in 1645. He was imprisoned and fined by the Commonwealth, but was restored to Parliament after the Restoration in 1660.

The church of St. Nicholas dates back to the 12th century and at that time the lordship of Sutton was held by the De Fresne or Freine family. Sutton St. Nicholas is to be identified as Sutton Freen. The church was enlarged in the 13th/14th centuries. The spire was removed in the mid-18th century as the cost of repairs could not be met. The majority of repairs and alterations were made in the 19th and 20th centuries.

The church of Sutton St. Michael also dates back to the 12th century. The church, lands and titles were paid to the priory of St. Guthlac (now the site of the bus station in Hereford). Towards the end of the 12th century, the Priory made over its rights in St. Michael to the Knights Hospitallers of St. John to form a large estate controlled from their headquarters at Dinmore. Their headquarters in Sutton were at Overcourt. In the 16th century the Sutton estate was acquired by the Lingen family from Freen's Court. The church was restored in the mid-19th century, again in the early 20th century and most recently the bell tower was restored in the early 21st century.

The Wergin Stone which stands on the left-hand side of the Sutton to Hereford road (near the 3rd mile stone) has been described as a "megalithic pre-historic structure of shaft and base" (Martin 1953). However its true date is unknown and it has been suggested it may have been a flood marker. The base is an irregular pentagon with a cavity on its top, the shaft is let into the base at its narrow end in a mortice hold. It was known as "Ye Divell's Stone" after it mysteriously moved 240 paces in 1641/2 and had to be relocated to its original site.





## SUTTON ST. NICHOLAS TODAY

Sutton St. Nicholas is a rural parish approximately 5 miles North East of Hereford, and falls within the Sutton Walls Ward which includes Marden and Moreton-on-Lugg.

The population of the parish at the last census of 2001 is 867 with 23.4% under 19 years old, 51% from 19 – 60 years, and 25.6% over 60 years.

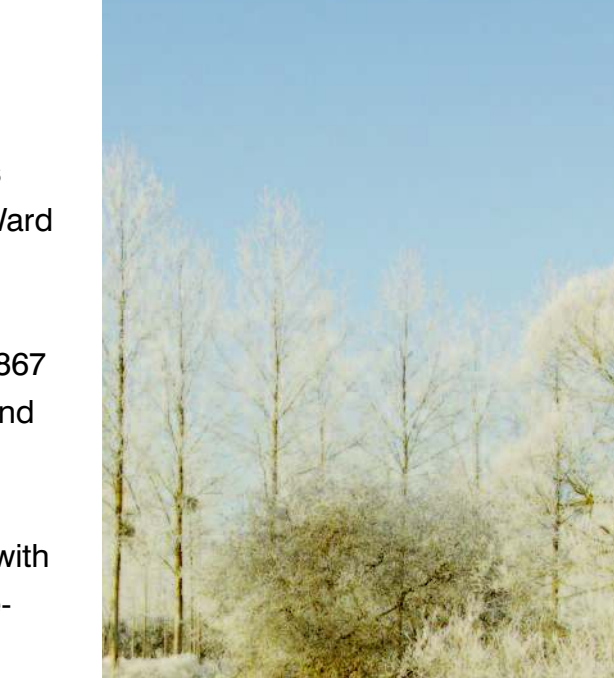
There are approximately 410 properties within the parish with a predominately residential population. 79% of the householders in the parish own their properties either outright or with a loan/mortgage. 11.1% are social rented accommodation, 6.1% rented from a private landlord and 2.9% tied homes.

68.3% of the parish is economically active either in full or part-time employment, or self-employed. Of this number 84% work outside Sutton St. Nicholas and 16% from their home. 1.9% of this number are students.

Arable farming is the main industry within the parish with some of the farmland contracted out. There is in addition a small number of livestock.

The village of Sutton St. Nicholas has two churches, St. Nicholas and St. Michael, which are in regular use. It also has one public house, The Golden Cross Inn. The school and pre-school are in a new building with the village hall.

It is hoped that the parish of Sutton St. Nicholas will continue to grow and thrive and meet the demands of its parishioners over the years to come.







## THE COMMUNITY PLAN

At a public meeting in Sutton St. Nicholas Village Hall in January 2011 a Steering Group was formed which included a number of parish councillors together with members of the parish. This group has met approximately monthly throughout the process. Four presentations, with the aid of Planning For Real material were given between May and July 2011 at the following venues:-

- The Golden Cross Inn
- Sutton Primary Academy
- Woodville Grove
- Sutton St. Nicholas Summer Fete

In addition, consultations were set up with various interest groups within the parish e.g. Gardeners Club, Keep Fit, W.I., Sutton Academy, plus a consultation at Bishop's School for the 11-16 year olds.

These venues and events were considered to encompass all ages within the community, and people with varying interests. From the data received from the presentations two questionnaires were compiled, one for adults (18 years and over) and one for the youth of the parish, (6 -17 years). These questionnaires were hand delivered and collected from 410 households in the parish. There was a very positive response of 67% from the questionnaires. Two cash prizes were drawn, one from each of the age groups of the questionnaires.

The questionnaires were then sent to Herefordshire Council Research Team for an initial analysis in June 2012, then a more detailed analysis and report was issued in December 2012. Following the receipt of the detailed analysis the Steering Group met and identified issues where there was a clear overall mandate, issues where there was a clear minority need, and issues where there was neither majority support nor a minority need. Linked to issues that were thought to be a priority and could be influenced, a number of



objectives were developed with actions to achieve them. The draft action plan was sent to Herefordshire Council's Research Team for comment and consultation with interested parties.

The objectives were grouped into five themes:-

- The Environment
- Facilities
- Highways
- Growth within the Parish
- Communications

The action plan is laid out according to these themes. Each theme has an introduction and overview of the results of the questionnaire. This is followed by a table of objectives, which includes actions, sub-actions, the body responsible (owner), and a time priority.

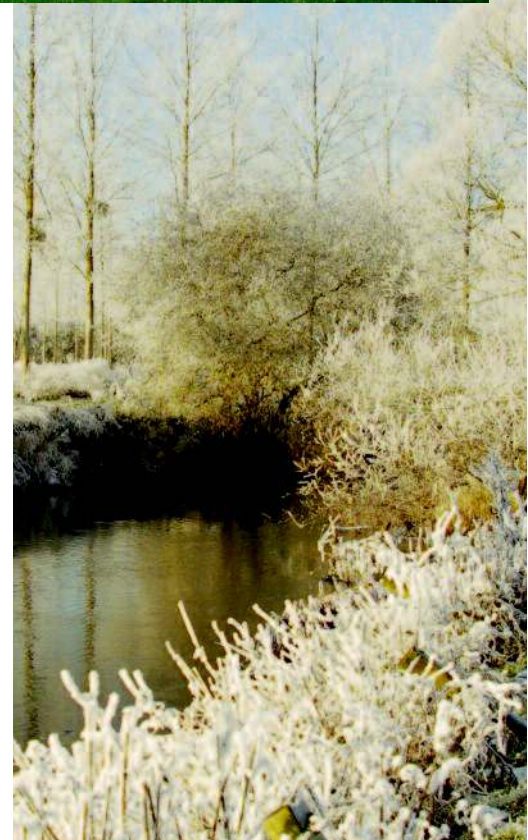
The various actions are:

- Actions that the local community can deliver itself
- Actions that require assistance from outside agencies
- Issues that are related to Herefordshire Council

The time priorities are set out as follows:

- Immediate – to take effect now
- Short Term – within 6 months to 1 year
- Medium Term – 1 year to 3 years
- Long Term – 3 years +
- Ongoing – continuous action

It is hoped that many members of the community would like to be involved in bringing the plan to fruition. Contact details are available at the end of the booklet for those who are interested.







## THE ACTION PLAN

### OUR ENVIRONMENT

The environment in which we live is important to everyone as it shapes how we feel about our home and our village locality. Not surprisingly this section of the questionnaire received interest with 96 households, over one third, offering to be involved in some way or other, whether through litter picking, neighbourhood and farm watch schemes or working on an environment plan. An environment group was set up to develop the objectives and actions comprising seventeen people.

The objectives were drawn directly from the questionnaire, with the additional objective which overrides the whole environment principal:

*'To protect and enhance the distinctive local, natural and historic environment '*

This objective will be important in the development of a parish Neighbourhood Plan which will specify the future planning and development requirements for Sutton.

Not all objectives selected for the Action Plan had a majority interest, in some cases they had a small response but the concern was great for those individuals, for example flooding that affected only 13% of respondents.

Over half the respondents felt there was a problem with at least one of the issues of dog fouling, bonfires, road noise, fly-tipping, noisy neighbours or agricultural spraying. Most of these have been addressed in the Action Plan.





The strongest support was for the reduction of the carbon footprint of the parish with 74% saying they supported this objective, which equates to 174 households. The actions to achieve this objective include supporting and promoting use of the local bus service, car share schemes, footpaths, local facilities & amenities, and investigating a variety of renewable energy schemes.



Safety was a concern for a number of residents with burglary, leaving the house unattended and walking alone at night being the greatest fears. These have been addressed in the Action Plan with, for example, re-instating Neighbourhood Watch schemes. The low level of confidence in the local police service, particularly around the lack of visibility, was considered to be out of the scope of the Action Plan although support for increased policing would always be encouraged.



### The objectives

- To protect and enhance the distinctive local, natural and historic environment
- To reduce the carbon footprint of the parish
- To reduce the level of litter and rubbish in the parish
- To reduce the impact of flooding, field and road run-off (linked to highway section)
- To reduce the problem of dog fouling, bonfires & fly tipping
- To help people feel safe in the village





12

**Objective 1: To protect and enhance the distinctive local natural & historic environment**

	Action	Sub action	Owner	Priority
1	Develop and support plans that encourage preservation and appreciation of the distinctive local environment	<p>Include in Neighbourhood Plan. Investigate Environmental Stewardships</p> <p>Enlist guidance from other villages e.g. Luston</p>	Parish Council Steering group	Short term
2	Identify and record local natural history and biodiversity	<p>Surveys and children's activities to investigate &amp; record fauna &amp; flora</p> <p>Enlist help from specialist bodies such as Nature Trust</p>	<p>Steering group</p> <p>Steering group</p>	<p>Short term</p> <p>Immediate</p>
3	Identify and record areas of distinctive land-use, historic buildings, and landscapes	<p>Surveys &amp; children's activities to record manmade environment e.g. old houses, farms, orchards, fields, water meadows, quarry, hedgerows, ponds, churches, Sutton Walls Iron Age &amp; Roman settlement, scheduled ancient monument by St. Michaels</p> <p>Enlist guidance from villages e.g. Luston, and Herefordshire Archaeology</p> <p>Research &amp; gather existing information - Graveyard surveys, local pamphlets, local knowledge etc. Compile document/booklet</p>	<p>Steering group</p> <p>Steering group</p> <p>Steering group</p>	<p>Short term</p> <p>Short term</p> <p>Medium term</p>



## Objective 2: To reduce the carbon footprint of the Parish

	Action	Sub-action	Owner	Priority
1	Support local bus service	Support retention and possible improvements to bus service. Actively engage with providers and council Encourage use of bus service  Make improvements to the bus shelter	Steering group Parish Council  Parish Council Steering group	On-going, as needs arise   Long term
2	Promote and investigate car-journey share, car pools, communal vehicle schemes and car hire discount	Promote existing car journey sharing scheme <a href="http://www.twoshare.liftshare.com">www.twoshare.liftshare.com</a> Possible system on notice boards Promote existing council car pools  Look into communal car schemes e.g. St. James' Hereford <a href="http://www.stjamescarclub.org">www.stjamescarclub.org</a>	Steering group   Steering group	Immediate  Short term Immediate  Long term
3	Support any proposed bicycle paths, and improvements to footpaths and pavements	Linked to Highways	Steering Group  Parish Council	Long term
4	Support development of local amenities to reduce the need for journeys e.g. Village Shop, Post Office, Library.	Linked to Facilities section	Steering Group  Parish Council	Medium term
5	Develop renewable energy sources	Investigate solar, wind, water or ground energy sources for whole village community. Research where these have been developed e.g. <a href="http://www.shareenergy.coop">www.shareenergy.coop</a>  Look into viability of renewables for Village Hall – solar photovoltaic panelling on roof, wind turbine, ground heat sources	Steering group  Steering group	Long term  Long term
6	Encourage local energy efficiency	Inform the community of schemes and grants, through the website & Sutton News. e.g. insulation grants; household energy monitoring; <a href="http://www.energysavingtrust.org.uk">www.energysavingtrust.org.uk</a> CheaperEnergyTogether Community Partnership project providing a collective energy switching service	Steering Group Parish Council	Immediate & On-going





### Objective 3: To reduce the level of litter and rubbish in the Parish

	Action	Sub-action	Owner	Priority
1	Recruit helpers to collect litter	Approach people who offered support on their questionnaire	Steering group	Short term On-going
2	Supply litter picking equipment to collectors and dog walkers	Parish Council through Herefordshire Council to provide equipment	Steering group Parish Council	Immediate
3	Establish Annual or Bi-annual Village Litter pick	Make these into fundraising fun days	Steering group	Short term On-going

### Objective 4: To reduce the problem of dog fouling, bonfires and fly-tipping

	Action	Sub-action	Owner	Priority
1	Identify and target problem areas through communication including Sutton News, website	<p>Look into improving dog fouling signage around the village</p> <p>Determine the need, cost and responsibility of providing dog foul bins</p> <p>To report a bonfire causing a disturbance contact: Herefordshire Council, Environmental Health &amp; Trading Standards, Blueschool House PO Box 233. Hereford HR1 2ZB. 01432 261761 info@herefordshire.gov.uk</p>	Steering group Parish Council	Short term
2	Encourage people to report fly-tipping to Parish Council or Herefordshire Council		Steering group Parish Council	Short term
3	Investigate similar schemes to the old Parish freighter scheme to reduce tipping		Steering group Parish Council	Medium term



**Objective 5: To reduce the impact of flooding, field and road run-off (linked to Highway section)**

	Action	Sub-action	Owner	Priority
1	Develop a map of locations for houses & roads at risk	Identify problem areas through local knowledge and HC advice	Steering group	Medium term
2	Contact HC highways and Amey to resolve problem flooding in roads		Parish Council	Immediate & On-going
3	Communicate the location of sandbags and sand	Keep regular notices of the locations on Sutton News and Website	Parish Council	Immediate & On-going
4	Improve promptness of communicating flood alerts	Add information from Herefordshire council to Website as News Alerts Investigate Shropshire Environment Agency system	Parish Council Ward Councillor Steering group	Immediate & On-going
5	Establish village flood assistance network	Communicate through Sutton News & website. Investigate systems in other places e.g. Bodenham	Steering group	Medium term

**Objective 6: To help people feel safe in the village**

	Action	Sub-action	Owner	Priority
1	Encourage the development or re-establishment of Neighbourhood Watch and Farm Watch schemes	Provide information to the community, from the West Mercia Police website. Seek further guidance and information from Police, Herefordshire Council, HALC  Create a communication link for those who expressed an interest in developing Neighbourhood or Farm Watches on their questionnaires	Parish Council Steering group  CLP committee Steering group	Short term  Short term
2	Provide village with advice on home security	Facilitate a village presentation on home security or communicate through website & Sutton news	Parish Council	Medium term
3	Support community groups and individuals in providing transport & accompanying individuals			On-going



## FACILITIES

For a village to remain sustainable there must be some consideration of the facilities involved and how these can support the community in the most effective way possible.

The facilities section of this Plan covers five areas, and these areas have been selected as a result of the most frequent responses in the questionnaire, specifically in the stronger communities section.

These areas include:-

- **Village Shop and Post Office**, which was considered an important facility in the village by 89% of those asked.
- **Young Peoples Facilities** was supported by around half of the families known to have children within the village.
- **Transport for Accessing Healthcare**, as 10% of the respondents expressed a difficulty in accessing Healthcare facilities.
- After inviting respondents to indicate additional interest clubs, **History Club** was by far the most popular amongst residents with four times as many suggestions than any other interest.
- **Provision of Nursery Facilities** was considered important by almost 200 respondents who answered the questionnaire.





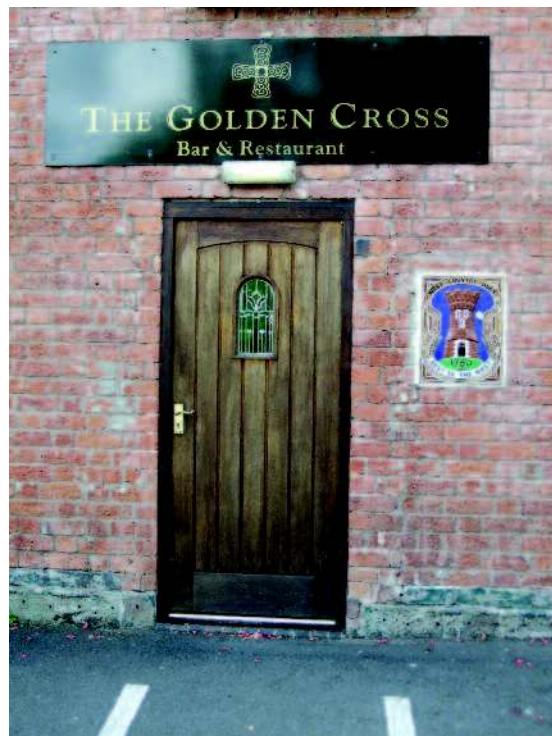
## Facilities Objectives

	Action	Sub-action	Owner	Priority
1	Village Shop and Post Office and library	Investigate viability from within the village, and from the Post Office Identify location of possible premises Investigate interest of community led farm shop Forming a viability sub- committee Investigate community library scheme	Steering Group Parish Council  Steering Group Steering Group (Les Chambers) Steering Group Parish Council	Medium term & On-going
2	Young Peoples facilities	Seek further interest of a Youth Club Identify potential areas for a football pitch Installation of basketball hoop and promote current play area facilities Identify numbers interested in Brownies, Cubs and Scouts.	Parish Council Steering Group  Parish Council Steering Group	Short term Medium term  Immediate Short term
3	Transport for Accessing Healthcare  Linked to Environment section	Consider purchase of vehicle (mini bus) and reduce cost for villagers  Look at local bus services and create better awareness Investigate introduction of a local volunteer group to support residents with transport needs	Environment Steering Group Parish Council  Environment Steering group Steering Group Parish Council	Medium term  Ongoing Short term
4	Provision of Nursery	Investigate existing services in the area Advertise to ascertain numbers interested in attending Consider relevant location/ premises	Steering group  Parish Council Steering group	Medium term  Medium term Medium term
5	History Club	Define number of residents interested and gather information on how Wellington and Marden run their Club	Steering group (Les Chambers)	Immediate



Services such as a Post Office are, to a large extent, dependent on authorities outside of the village, however they may be attainable as part of any development at a later date along with a Village Shop.

The provision of extra Young Peoples facilities creates a focus on areas that could be realised using expertise already available amongst the village residents. The same could be said in part about Transport Issues and the History Club, whereas the provision of a Nursery would involve professional input, with a facility and qualified staff to run it.





## HIGHWAYS

The Questionnaire responses indicated a number of areas of concern related to Highways with nearly 200 commenting on places where they felt road safety was an issue. The speed of many vehicles was also felt to be excessive.

Identifying the areas which are particularly problematic led to the highlighting of the Golden Cross crossroads as the primary concern. Speeding was felt to be an issue on the Marden road, the Ridgeway (towards Withington) and on Wyatt Road.

Footpaths were also highlighted, specifically the need for one between the Golden Cross bus stop and Woodville and from the Old Post Office towards St Michael's Church. Other footpaths needed to be easier to find and to use and any problems encountered needed to be easily reported. There was also substantial interest in an eventual foot and cycle route along the reinstated Hereford & Gloucester Canal.

Initial action has already been taken by the Parish Council on the Golden Cross area concerns. Various options having been discussed with Amey. The speeding issue within the current village speed restricted zone may be addressed by increased use of Speed Indicator Devices and possible further use of the Police to undertake speed checks. A group of Parish Councillors met with Andrew Lee-Jones of Amey to discuss the illegal parking at the crossroads, and he advised that the best solution would be to introduce double yellow lines for 30 meters at each of the roads. This idea was advertised with comments to be made to Kema Guthrie, who, if enough residents were agreeable, would proceed to apply to Amey. The majority of residents who responded were against the idea, so the proposal will not go ahead at present.







The village has a new Footpaths Officer who is undertaking a survey of the state of the paths at present. It is intended to introduce an additional method of problem reporting using the village website. A map of village walks will be posted on the website and village noticeboards and copies made available to people without web access on request. The lengthsman, funded through the lengthsman scheme, maintains verges, pathways and signage along the highways.

Cycle routes and the canal foot/ cycle path are longer term projects which are influenced by progress made by Sustrans and the Hereford & Gloucester Canal Trust.



## Highways Objectives

	Action	Sub action	Owner	Priority
1	To improve visibility at crossroads with attention to parking	Parish Council to meet with Andrew Lee Jones from Amey to discuss. Possibility of having yellow lines at crossroads, for 30m in each direction	Parish Council Steering group	Ongoing Medium term
2	Speeding through Parish	Possible reciprocal pilot scheme with another parish to monitor speeding.  Community pursues with Police & Crime Commissioner.  Continuous use of S.I.D.s in parish. Possible purchase with another parish?  Police to monitor speed.  Traffic calming	Parish Council Kema Guthrie  Parish Council  Parish Council  Parish Council Steering Group	Short term  On-going  On-going  Medium term Medium term
3	Village Footpaths. Footpaths Officer to maintain Footpaths & signs.	To post a quarterly report on the village website re: paths/signs, and report in Sutton News.  Contact number and reporting system to be enabled so problems can be reported.  Map of village walks to be posted on Website and possibly noticeboards.	Parish Council  Parish Council  Steering Group Parish Council	Immediate  Immediate  Medium term
4	Improvements to pavements Lengthsman scheme – to ensure paths, verges and pavements are well maintained	Continue to press Council to provide new pavement from St. Michael's to Back Lane by the old Post Office.  Support provision of new pavement from Woodville to Court Farm.  Contact number on website and Sutton News	Parish Council Steering Group  Parish Council Steering Group  Parish Council	On-going Long term  Ongoing Long term  Immediate
5	Canal Route	Contact Canal Trust with possibility of walk/cycle route.	Steering group	Long term On-going
6	Cycle Route New routes avoiding main roads	Contact Sustrans re possible routes.	Steering Group	Long term On-going





## GROWTH WITHIN THE PARISH

### Housing

The majority of respondents (65%) thought that there should be some new housing built in the village, but within limits. 14% opposed any new housing and 3% thought there should be no limit on new housing.

Of the 228 respondents supporting new homes the majority (70%) saw a need for starter homes for rent or low cost purchase and just over half (51%) thought there should be more homes of 3/4/5 bedrooms. Eco homes would be supported by 41% and just under a third (31%) agreed with provision of more accommodation for the elderly. Flats were a less popular choice – 9% would support such development.

### Business

In general, there was support from the majority of respondents for a proposal to encourage small businesses in the parish; from 86% of the 233 respondents who answered the question. Just under half of the respondents (46%) would support encouraging workshops. Medium or large businesses, with support from 16% and 4% of respondents respectively, were seen as less desirable entities for encouragement to come to the parish.



## Growth Objectives

	Action	Sub Actions	Owner	Priority
1	That the Parish Council completes a Neighbourhood Plan (NP)	<ul style="list-style-type: none"> <li>• Defining the neighbourhood</li> <li>• Preparing the Plan</li> <li>• Independent check</li> <li>• Community referendum</li> <li>• Legal force</li> </ul>	Parish Council supported by the Neighbourhood Plan steering group and Community Led Plan Group	Medium term
2	The Neighbourhood Plan (NP) reviews the current village envelope to allow limited development near existing homes	Activity included in 'Preparing the Plan' under Item 1	Neighbourhood Plan steering group supported by the Community Led Plan Group	Medium term
3	The NP identifies specific sites where low cost homes could be built. It is recommended that land to accommodate 20 homes is earmarked, rather than the 10 currently identified as needed by the Housing survey	Activity included in 'Preparing the Plan' under Item 1	Neighbourhood Plan steering group and supported by the Community Led Plan Group	Medium term
4	The NP considers appropriate means of providing low cost homes in the village	<ul style="list-style-type: none"> <li>• Initial discussion with Herefordshire Council's Housing Team</li> <li>• Investigation of social housing providers in Herefordshire</li> </ul>	Neighbourhood Plan steering group and supported by the Community Led Plan Group	Medium term
5	The NP identifies land and or buildings suitable for use by small businesses	Activity included in 'Preparing the Plan' under Item 1	Neighbourhood Plan steering group and supported by the Community Led Plan Group	Medium term
6	The Parish Council fully supports the high Speed Broadband project		Parish Council supported by the Community Led Plan Group	Immediate





## **The Proposals in the Plan**

The essential task is for the Parish Council to develop a Neighbourhood Plan over the next few years.

A Neighbourhood Plan will allow the community to control the type of development it wants in the village. Until the Neighbourhood Plan is completed the Community Led Plan has to be considered by Herefordshire Council when reaching planning decisions but it does not have the weight carried by the Neighbourhood Plan.

The current “settlement boundary” within which development is permitted, does not contain sufficient land for the supported development to take place. For this reason a review of the boundary is recommended. It is worth noting that the Herefordshire Council has already agreed a planning application outside the settlement boundary. This makes it all the more important that areas for new development, acceptable to our community, is defined in the Neighbourhood Plan.

To support the desire to have more starter homes, it is proposed that specific areas of land are identified for this use and investigations are made into social housing providers. The community support for small businesses is reflected in an objective to include land/buildings for that purpose in the Neighbourhood Plan.

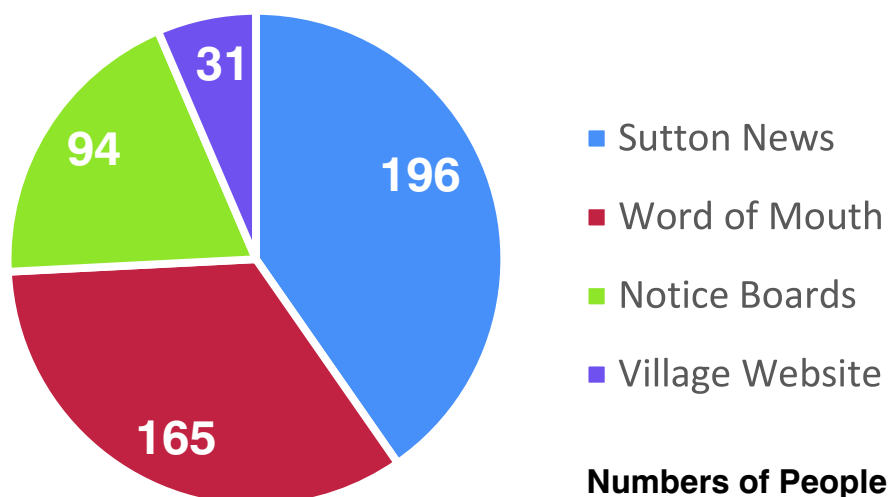
The proposed High Speed Broadband for rural communities is supported in the Plan because it makes the growth of small businesses in the community more viable.





## COMMUNICATIONS

### Where People Find Out What Is Going On In The Parish



#### Findings

Respondents were asked to choose as many means as appropriate to indicate where they got their parish information, most used more than one method: Sutton News - 75%, word of mouth - 63%, with just over a third - 36% finding out from Notice Boards and some 12% from the Village Website, these findings are shown in the chart above.

However 103 people only gained knowledge about what was going on in the parish exclusively from one source; 60 from the Sutton News, 30 by Word of Mouth, 10 from Notice boards and 3 from the Village Website.

Respondents were also asked about other means of finding out what was going on in the parish, with other places of information exchange being mentioned such as the school and the Golden Cross Public House.

In relation to existing means of communication two issues came up several times, these were the need to improve the Village website and the lack of delivery of Sutton News to every home in the parish.







With regards to the need for new notice boards in the Parish 244 people answered this question. Most respondents, 72%, did not see any need for more notice boards in the Parish, with 28% of respondents disagreeing and wanting more.

There were many suggestions for new sites for notice boards, with the most frequent sites being at the crossroads, near the church, the school and at the village hall. It was also felt that notice boards somewhere where cars could pull up would be advantageous, old notice boards should be removed, current notice boards could be enlarged and that notices on telegraph poles are unsightly.



welcome to  
*faster*shire  
Faster broadband for Herefordshire and Gloucestershire

[www.suttonstnicholas.co.uk](http://www.suttonstnicholas.co.uk)

## Communications Objectives

	Action	Sub Actions	Owner	Priority
1	Ask Parishioners what information they would like to see on an upgraded Village Website.	Notice put in Sutton News and on current website	Parish Clerk on behalf of the Parish Council	Immediate
2	Improve /upgrade the Village Website to make it easier for the Parishioners to find information	Seek presentations from possible contractors Set up a website working group	Parish Clerk on behalf of the Parish Council	Immediate
		Ensure that the upgraded Website enables all organisations within the Village can use the site.	Parish Council Project Group	Immediate
		Parish Council to use website to disseminate information to Parishioners.	Parish Council Project Group	Short term
3	Improve the visual outlook of the current notice boards	Investigate methods of improving notice boards	Parish Clerk on behalf of the Parish Council	Short term
4	Increase the subscribers to Sutton News	Contact details of editor to be included in the final Community Led Plan report.	Parish Clerk	Immediate





## SUMMARY AND HOW TO GET INVOLVED

Since the last Parish Plan was finalised in March 2003, Sutton St. Nicholas has seen:

- The building and completion of a new primary school which is now an Academy, together with a pre-school facility
- plus the building of Sutton St. Nicholas Village Hall which supports a wide variety of activities such as W.I, Gardening Club, Zumba, Health and Fitness, Ballroom Dancing, lunch clubs, Village events, childrens parties and weddings
- The playing field re-equipped with more facilities for children aged between 8 and 13.
- A speed restriction of 30mph introduced throughout the village with a part-time 20mph zone around the school, and a pedestrian crossing.
- Starter homes and new build homes built at Lingen Field and on the Hereford-Bodenham road, the old school site converted into new homes, and numerous smaller developments and alterations on private properties.

Over two years have passed since the Parish Council gave the go-ahead for the Steering Group to produce a new Community Plan. Every effort has to be made to ensure that the priorities and actions identified in the plan are implemented. A number of individuals within the Parish have kindly offered their services to help carry out these action and initiatives. Responsibility has been allocated to individuals, the Parish Council and Steering Groups to ensure that this is done. If anyone is interested in helping or being involved please contact the following:

**Environment:**

- Judy Stevenson judy@creswell.co.uk  
01432 880748
- Ann Burke david@centralbakery.co.uk  
01432 880202
- Renewable energy: Keith Lawton  
kalnet@btinternet.com 01432 880817
- Local History & Natural History: Stas Calder  
anastasia.calder@btinternet.com 01432 880410,  
Judy Stevenson judy@creswell.co.uk  
01432 880748
- Litter Reduction: Les Smith ljs@lineone.net  
01432 880887
- Neighbourhood & Farm Watch: Ann Burke  
david@centralbakery.co.uk 01432 880202

**Facilities:**

- Les Chambers Lpc995@googlemail.com  
01568 797072
- Roy Talbot-Smith roymegan@gmail.com

**Highways:**

- Annette Mansie mansie@talktalk.net  
01432 880494
- Les Smith ljs@lineone.net 01432 880887

**Growth:**

- Ian Mansie mansie@talktalk.net 01432 880494,
- Parish Clerk ssnparrishclerk@btinternet.com  
01432 880673

**Communication:**

- Tony Ford ssnparrishclerk@btinternet.com  
01432 880673

**Neighbourhood Plan**

to outline future housing, building and land-use in Sutton:

- Parish Clerk, Tony Ford  
ssnparrishclerk@btinternet.com 01432 880673





Finally, the Steering Group would like to thank the following for their assistance in developing the Community Plan:

- All those in Sutton St. Nicholas who have shown an interest in its development
- Members of the Sutton St. Nicholas Parish Council  
Kema Guthrie, Ward Councillor for Sutton/Marden/Moreton-on-Lugg
- Members of the Hereford Partnership, Community First and Herefordshire Council Research team including Chris Gooding, Community Led Plan Co-ordinating Officer; Sophie Pryce & Cat Roberts, Community Led Planning Development Support Officers; and Rebecca Semple, Sustainable Community Development Officer

The Community Plan Steering Group comprised:

Annette Mansie  
Ian Mansie  
Stan Gyford  
Tony Ford  
Roy Talbot-Smith  
Les Smith  
Les Chambers  
Judy Stevenson  
Ann Burke  
Bill Glover



**Old School**



**New School**



**Playground Before & After**



## Useful Contacts for Sutton St.Nicholas:

### Community Plan Steering Group secretary

Annette Mansie    mansie@talktalk.net    01432 880494

### Parish Council Clerk

Tony Ford    ssnparishclerk@btinternet.com    01432 880673

### Parish Councillors

Judy Stevenson    judy@creswell.co.uk    01432 880748

Bill Glover    bill\_and\_marion@btinternet.com    01432 880890

Mike Winnell    mikewinnell@hotmail.com    01432 880785

Annette Mansie    mansie@talktalk.net    01432 880494

Ron Gow    ronald.gow45@btinternet.com    01432 880545

Ann Burke    david@centralbakery.co.uk    01432 880202

Richard Andrews    richard@courtfarmfeeds.co.uk    01432 880224

### Ward Councillor

Kema Guthrie    kguthrie@herefordshire.gov.uk    01432 830577

### Sutton Church Wardens

Keith Lawton    kalnet@btinternet.com    01432 880817,

Elaine Andrews    richard@courtfarmfeeds.co.uk    01432 880224

### Sutton Footpaths Officer

Mike Darley    mike.darley@hotmail.co.uk

### Sutton Lengthsman via Parish Clerk

Tony Ford    ssnparishclerk@btinternet.com    01432 880673

**Sutton News Editor** Cecilia Arlett    01432 880397

### Sutton Primary Academy

Chris Watkins    admin@sutton.hereford.sch.uk    01432 880336

### Sutton Village Hall Bookings Officer

Ann Burke    david@centralbakery.co.uk    01432 880202

**Sutton Village Website:** [www.suttonstnicholas.co.uk](http://www.suttonstnicholas.co.uk)

## Other useful contacts:

### Community Support Officer

Dean Wall 0300 333 3000 ext 4712 mobile: 07970 602443

### Local Police Officer

Neil James 0300 333 3000 ext 4747

Childline 0800 1111

Crimestoppers 0800 555111

Domestic Violence Helpline 0800 783 1359

Herefordshire Road Safety Hotline 01432 364582

National Drugs Helpline 0800 776 600

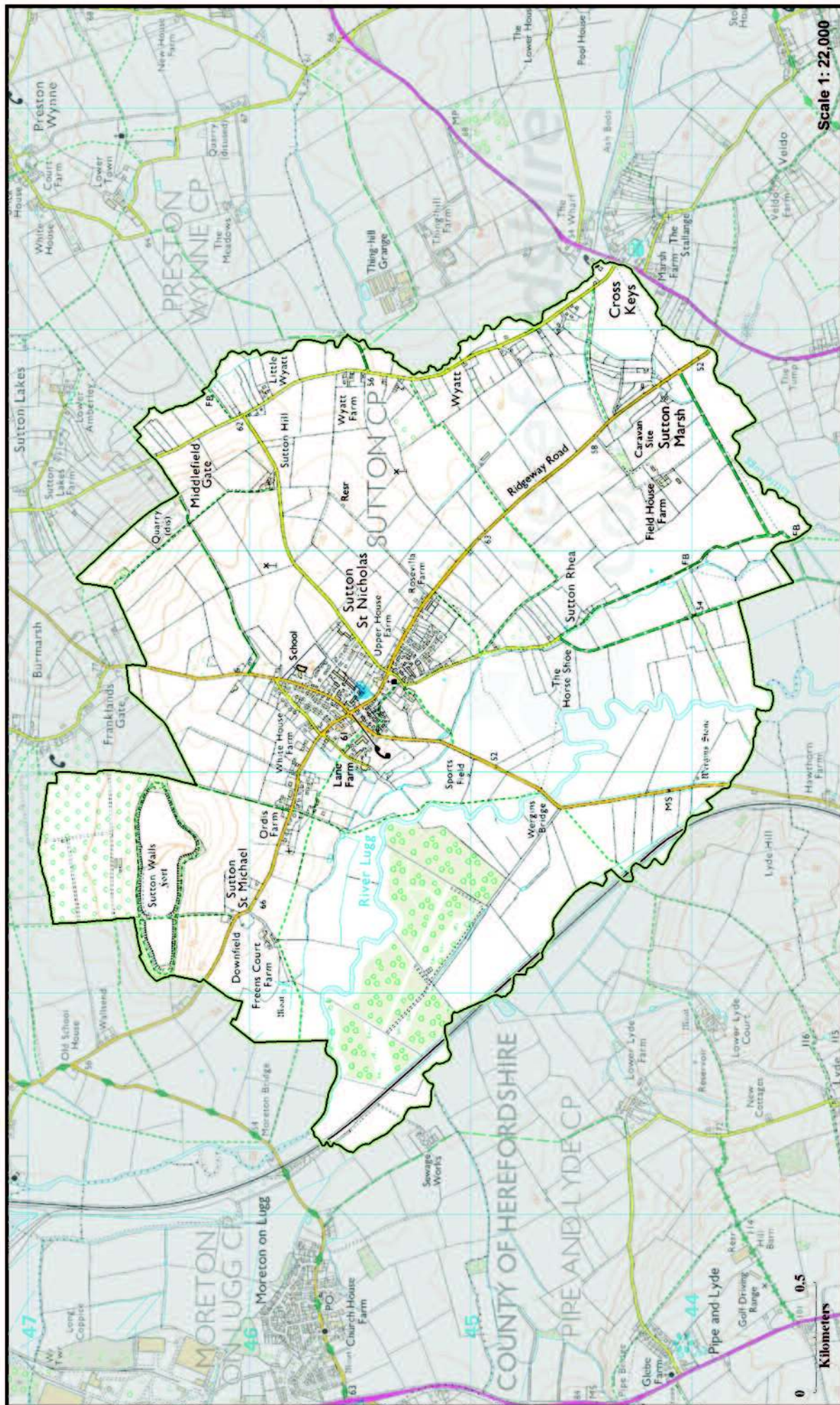
Victim Support 01432 347208

Hereford County Hospital 01432 355444

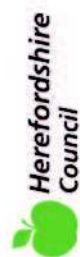
Herefordshire Council [www.herefordshire.gov.uk](http://www.herefordshire.gov.uk) 01432 260000







## Sutton St Nicholas Parish



© Crown copyright and database rights (2013) Ordnance Survey (100024168)

Technology and Transformation, Hoople Ltd Holme Lacy Road, Rotherwas, Hereford, HR2 6JT Tel: 01432 260160 Email: [gismapping@hoopleltd.co.uk](mailto:gismapping@hoopleltd.co.uk)